



August 2021 Newsletter



30th Annual Golf Classic Raises Over \$80,000 for Student Success

Nearly 200 players took to the links on August 12 at Swan Point Yacht and Country Club in support of the CSM Foundation. Thanks to our sponsors, golfers, and volunteers, over \$80,000 was raised to support student success. Special thanks to Marrick Homes who celebrated their 20th year as our event Presenting Sponsor.



[Read the full story](#)

[Event photos](#)

Kim Rosenfield and Randall Williams to Lead Board of Directors

The CSM Foundation Board of Directors appointed Kim Rosenfield '21 to an additional term as the board chair and appointed Randall Williams as the new vice-chair, effective July 1, 2021 through June 30, 2022.

Additional officers include:

Board Development Committee
Trey Proctor, Chair

Finance & Investment Committee
Randall Williams, Chair

Honor Prospecting Committee
Harry Shasho, Chair

Community Engagement & Special Events Committee
Brenda Lowe and Samantha Stratchko '18, Co-Chairs

Alumni Committee
Karen Elder '19, Chair

Trustee Representative: Shawn Coates
(Appointed by Board of Trustees)

Secretary-Treasurer: Dr. Maureen Murphy, CSM President

Executive Director: Chelsea Clute, Executive Director of the CSM Foundation



[Learn more about the CSM Foundation](#)

Foundation Donates 100 Graphing Calculators

As part of the CSM Foundation's ongoing commitment to student success and access, the foundation donated 100 TI-84CE graphing calculators to CSM's Math Resource Center. Students are welcome to check out a calculator at no cost and have access to one-on-one check-ins from a faculty advisor to help guide their educational journey. Pictured is Professor Donna Sperry displaying one of 100 graphing calculators available for student use.



[Learn more about the Math Resource Center](#)



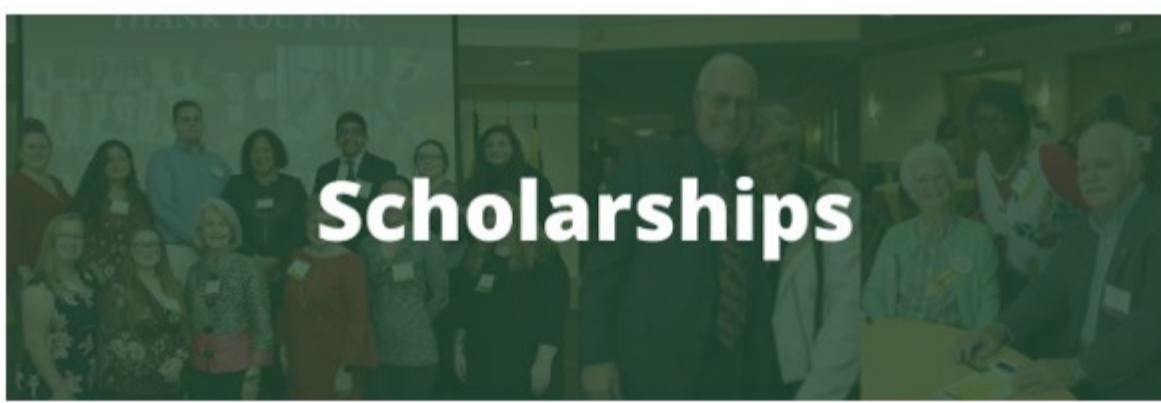
Leave Your Mark on Campus

An engraved walkway brick can create a lasting celebration of those who have a special connection to CSM. Your personally engraved brick can serve as a tribute to a family member, a friend, a special occasion, or simply to make your mark on campus. You provide the text, and we will ensure your brick becomes a part of the rich history of CSM.

Bricks are available with a donation of \$100.

For more information, please contact the CSM Foundation at csmfoundation@csmd.edu or 301-934-7599.

[Order now!](#)



Michael and Sara Middleton Nursing Scholarship

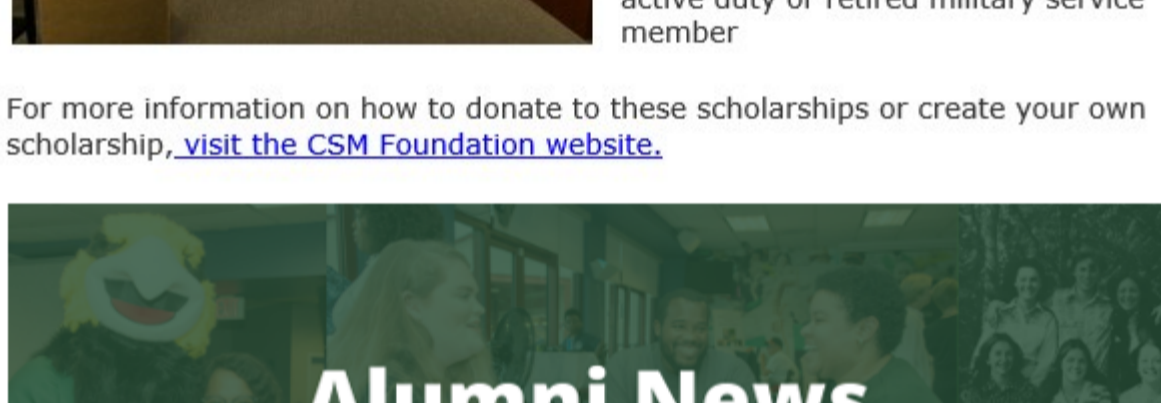
Established by Michael and Sara Middleton, this scholarship provides aid to Southern Maryland residents who are enrolled in the CSM Nursing program and planning to pursue their Bachelor of Science in Nursing degree through the Associate to Bachelor's (ATB) or Dual Admission Nursing Pathways.



Leonardtwn Rotary Flags for Heroes Scholarship

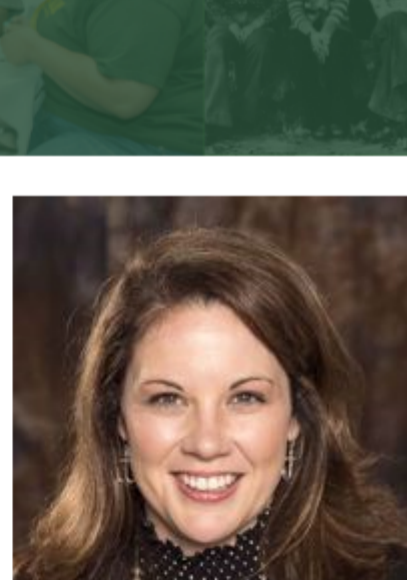
Established by the Rotary Club of Leonardtown, this scholarship provides aid to St. Mary's County residents who are veterans or the dependent (spouse or child) of an active duty or retired military service member

For more information on how to donate to these scholarships or create your own scholarship, [visit the CSM Foundation website.](#)



Join us in congratulating the following CSM Alumni for their recent achievements:

- Chelsea Clute '06 was appointed Executive Director of the College of Southern Maryland Foundation.
- Mike Bellis '19 joined the staff at the College of Southern Maryland Foundation as the Assistant Director of Alumni and Annual Giving.
- Renesha Miles '16 was recently promoted to Chief Equity Officer for Charles County Government



- Kimberly Bannister '07, Erin Farley '01, Stanley Harris Jr. '10, Monica Kempson '05, and Deborah Settle '16 all graduated from Leadership Southern Maryland's Executive Program class of 2021.

Got news? Share it with us on Facebook @CSMAlumniAndFriends; by email at alumni@csmd.edu; or through the [CSM Alumni and Friends Connection website.](#)

COLLEGE of SOUTHERN MARYLAND

— ALUMNI —

SPOTLIGHT

Kelly Williams
Class of 2010

#CSMProud #CSMAlumni

"Life is full of obstacles, hurdles, twists, and turns. It doesn't matter how fast you go as long as you work towards the finish line and reach your goal."
- Kelly Williams '10

Kelly earned her associate degree in 2010. Since then, she has earned her bachelor's degree in human resources management. She currently works for a Department of Defense contractor.

For more information, visit:
www.csmd.edu/Alumni



La Plata Campus Brick Recognition Ceremony

October 26, 2021
La Plata Campus

[Purchase a Brick](#)

2021 Giving Tuesday

November 30, 2021
Giving Tuesday is a global day of generosity that will take place on November 30, 2021. Follow us on social media to learn more!

Our Mission

The College of Southern Maryland (CSM) Foundation, established in 1970, is a nonprofit, tax-exempt organization with a charge to promote academic excellence, growth, progress, and the general welfare of the College of Southern Maryland by raising and managing funds and providing support to strengthen and develop the college and its objectives.

Our Vision

A reflection of who we are... A vision of who we will become.

Connect with us on Facebook Follow us on Instagram Join our Alumni group on LinkedIn

[Unsubscribe](#)
[College of Southern Maryland](#)
College of Southern Maryland 8730 Mitchell Road La Plata, MD 20646